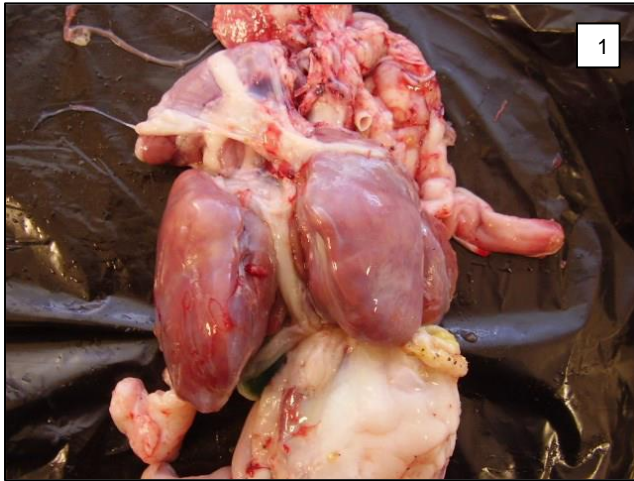


# Conditions for Rejection of Poultry at Post Mortem

## Peritonitis/Perihepatitis

### Post Mortem Disposition



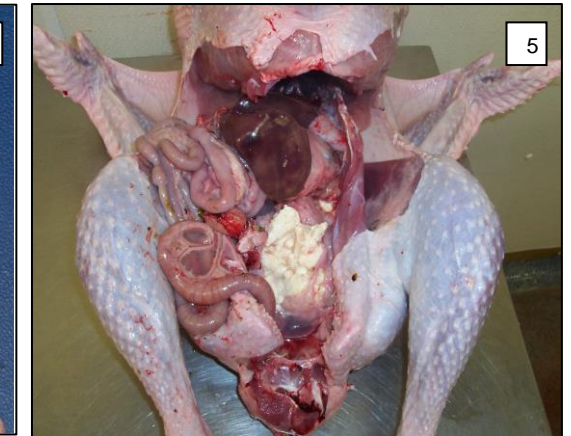
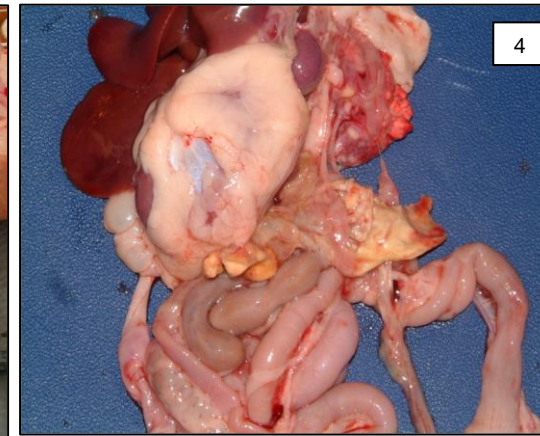
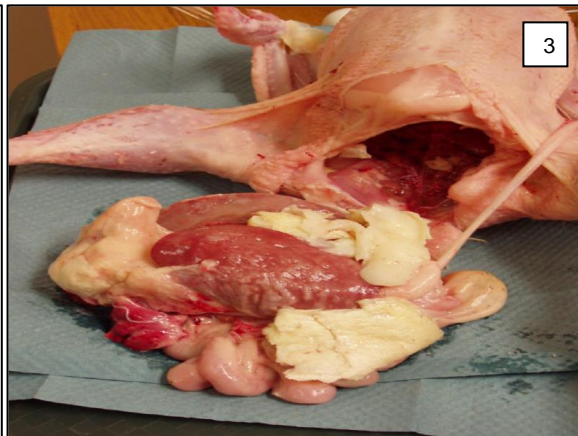
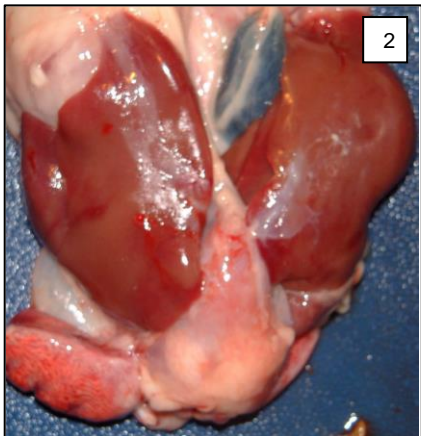
**Figure 1: Perihepatitis:** Note the fibrinous exudate covering the liver.

**Figure 2: Perihepatitis** with associated pericarditis.

**Figure 3: Peritonitis** with associated perihepatitis and pericarditis.

**Figure 4: Peritonitis** in a broiler: note the yellowish fibrinous material behind the gizzard, possibly *E.coli*.

**Figure 5: Peritonitis** in a turkey, fibrinous material also found.



### FSS Responsibilities

#### Post mortem disposition

Total rejection of carcase and offal.

#### Average rejection levels in GB

Poultry: 0.085%

#### Recording of the condition

The condition must be recorded on the "Peritonitis/Perihepatitis" entry of the Post Mortem Inspection section of OWS.

## Further Information

### Definitions

**Peritonitis:** Dry caseous or mucopurulent yellow exudates limited to the abdominal cavity

**Perihepatitis:** Inflammation of the liver capsule.

### Remarks/Consequences

**Peritonitis:** Inflammation of the membrane lining the abdominal cavity and forming a covering of all the organs in the abdomen.

**Perihepatitis:** fibrous liver appearance. Thickness and extension can vary between small and thin attachments to large and thickened liver fibrous attachments.

**Peritonitis/Perihepatitis** are not to be confused with oedema of the liver capsule (filmy transudate on the liver) that occurs with ascitic and fevered poultry.

### Causes

**Peritonitis** in poultry may be secondary to a previous conditions such as trauma, salpingitis, enteritis or hepatitis. For end of lay hens we usually find “egg peritonitis”. *E. coli* is the most commonly isolated bacteria although others such as *Pasteurella* can also be found

**Perihepatitis** is also normally caused by an *E. coli* infection, and less frequently *Salmonella*.

### Comments from Inspection Teams

Due to the current slaughterhouse line speeds and offal presentation for inspection system used, it is necessary to pay some attention before logging this condition, as it could be easily confused with airsacculitis.

*A PIA carrying out PM Inspection. Note how offal is presented in a tray correlated to the carcass.*



### What is the data on rejects used for?

The data helps the veterinary team to focus on possible causes such as immunosuppression from diseases such as Marek's and IBD, incidence of respiratory disease and even potential hygiene issues on the farm or in the hatchery.

### Acknowledgments to:

Ramon Romero (LV) for the development of this condition card with the support of Khaled Hussein (OV at 1100)

**Pictures:** Khaled Hussein; Asier Pagazaurtundua; Adrian Kacmar (OV at 4026), Ramon Romero (LV)